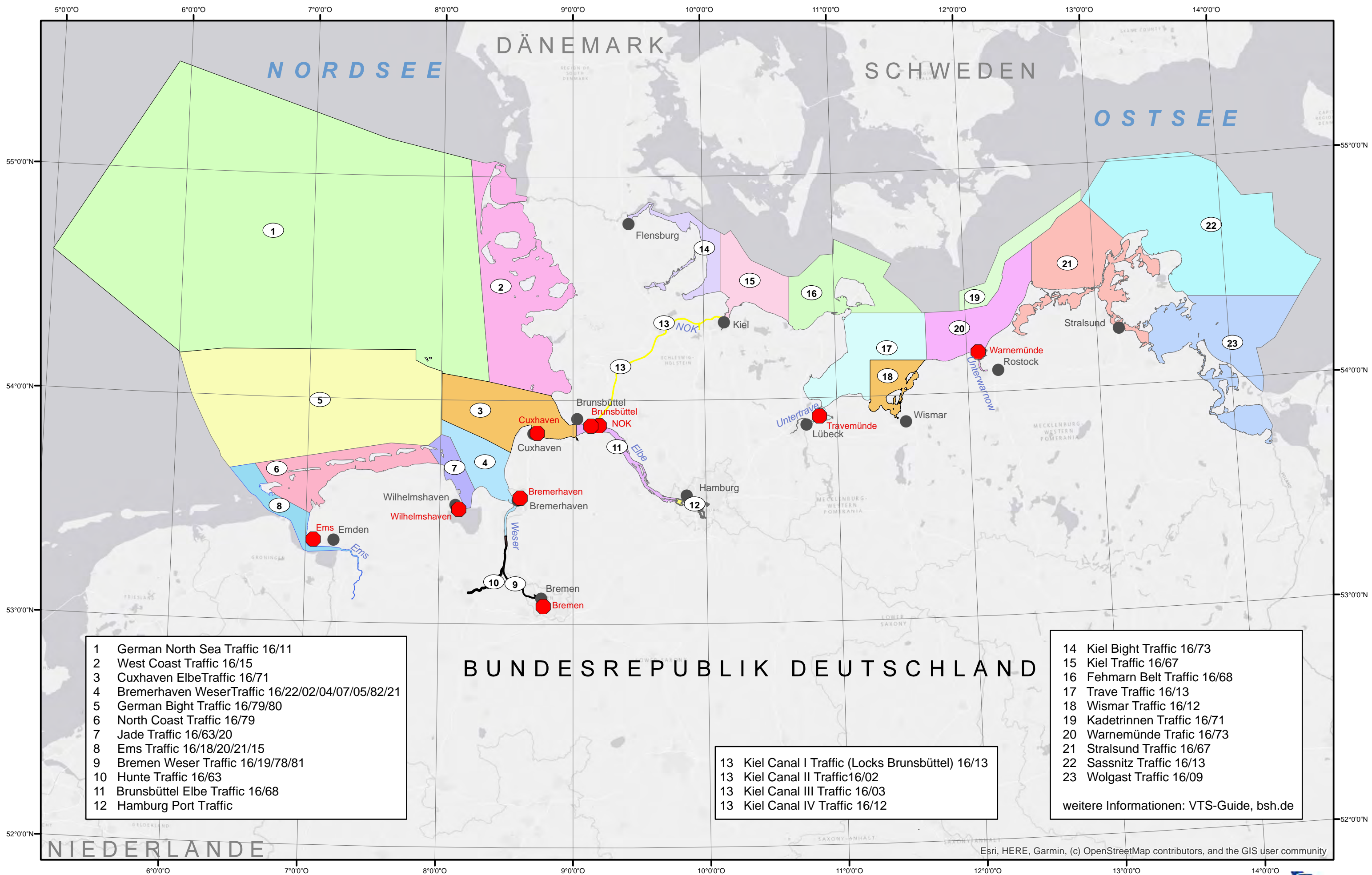


# Verkehrskanäle der Verkehrszentralen im Küstenbereich



- 1 German North Sea Traffic 16/11
- 2 West Coast Traffic 16/15
- 3 Cuxhaven Elbe Traffic 16/71
- 4 Bremerhaven Weser Traffic 16/22/02/04/07/05/82/21
- 5 German Bight Traffic 16/79/80
- 6 North Coast Traffic 16/79
- 7 Jade Traffic 16/63/20
- 8 Ems Traffic 16/18/20/21/15
- 9 Bremen Weser Traffic 16/19/78/81
- 10 Hunte Traffic 16/63
- 11 Brunsbüttel Elbe Traffic 16/68
- 12 Hamburg Port Traffic

- 13 Kiel Canal I Traffic (Locks Brunsbüttel) 16/13
- 13 Kiel Canal II Traffic 16/02
- 13 Kiel Canal III Traffic 16/03
- 13 Kiel Canal IV Traffic 16/12

- 14 Kiel Bight Traffic 16/73
  - 15 Kiel Traffic 16/67
  - 16 Fehmarn Belt Traffic 16/68
  - 17 Trave Traffic 16/13
  - 18 Wismar Traffic 16/12
  - 19 Kadetrinnen Traffic 16/71
  - 20 Warnemünde Traffic 16/73
  - 21 Stralsund Traffic 16/67
  - 22 Sassnitz Traffic 16/13
  - 23 Wolgast Traffic 16/09
- weitere Informationen: VTS-Guide, bsh.de

Esri, HERE, Garmin, (c) OpenStreetMap contributors, and the GIS user community

